





# Kenmare Growth Management Plan

---

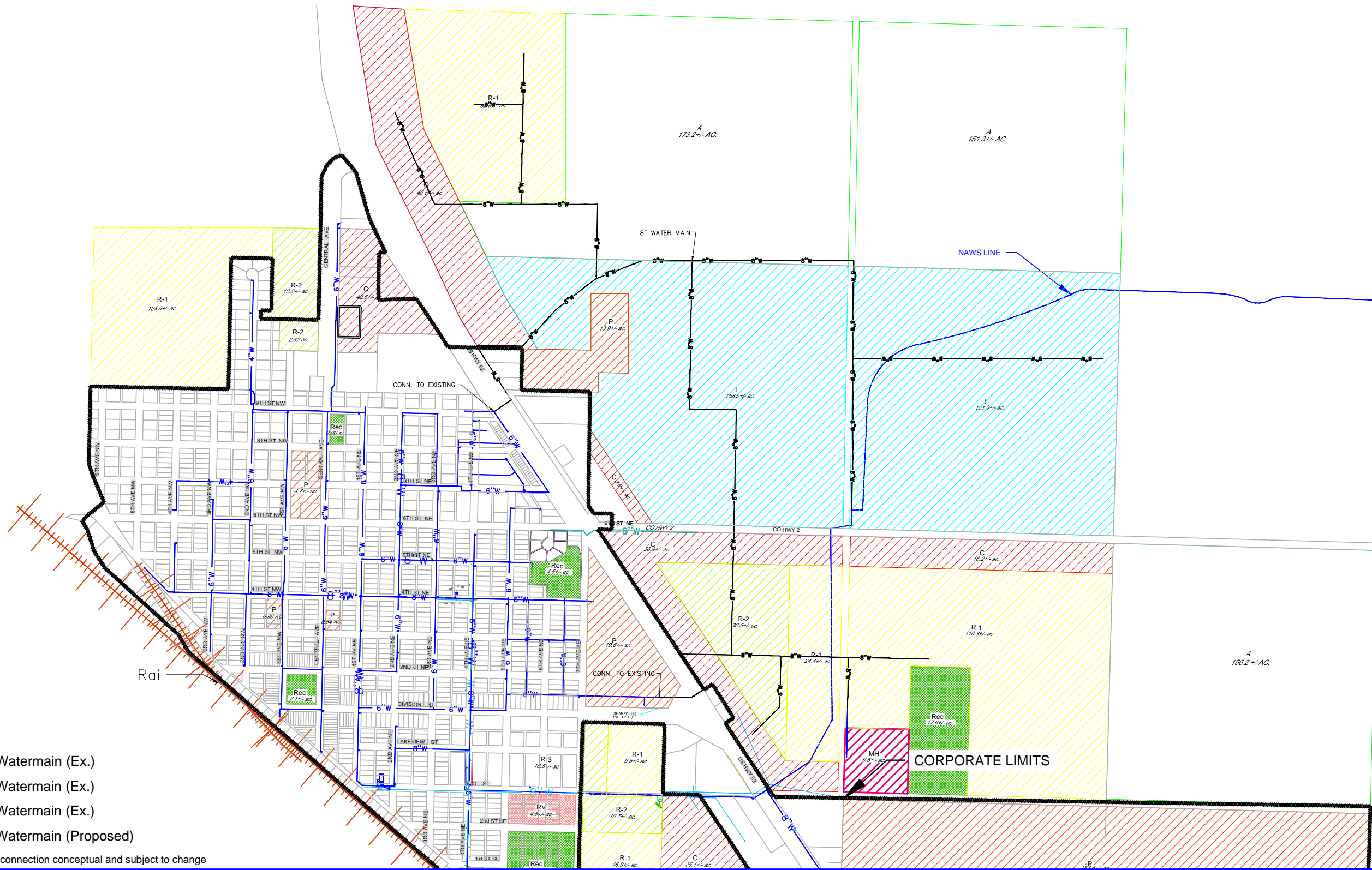
## **Future Utilities Expansion Maps**

THIS DOCUMENT, TOGETHER WITH THE CONCEPTS AND DESIGNS DEPICTED HEREIN, IS INTENDED ONLY FOR THE SPECIFIC PURPOSE AND CLIENT FOR WHICH IT WAS PREPARED. REUSE OF AND MISORDER RELIANCE ON THIS DOCUMENT WITHOUT WRITTEN AUTHORIZATION AND ADAPTATION BY ACKERMAN-ESTVOLD ENGINEERING AND MANAGEMENT CONSULTING, INC. SHALL BE WITHOUT LIABILITY TO ACKERMAN-ESTVOLD ENGINEERING AND MANAGEMENT CONSULTING, INC.

**Legend**

-  4 inch Watermain (Ex.)
-  6 inch Watermain (Ex.)
-  8 inch Watermain (Ex.)
-  8 inch Watermain (Proposed)

NOTE: Routing & points of connection conceptual and subject to change



NO. REVISIONS	BY	DATE	APPR.

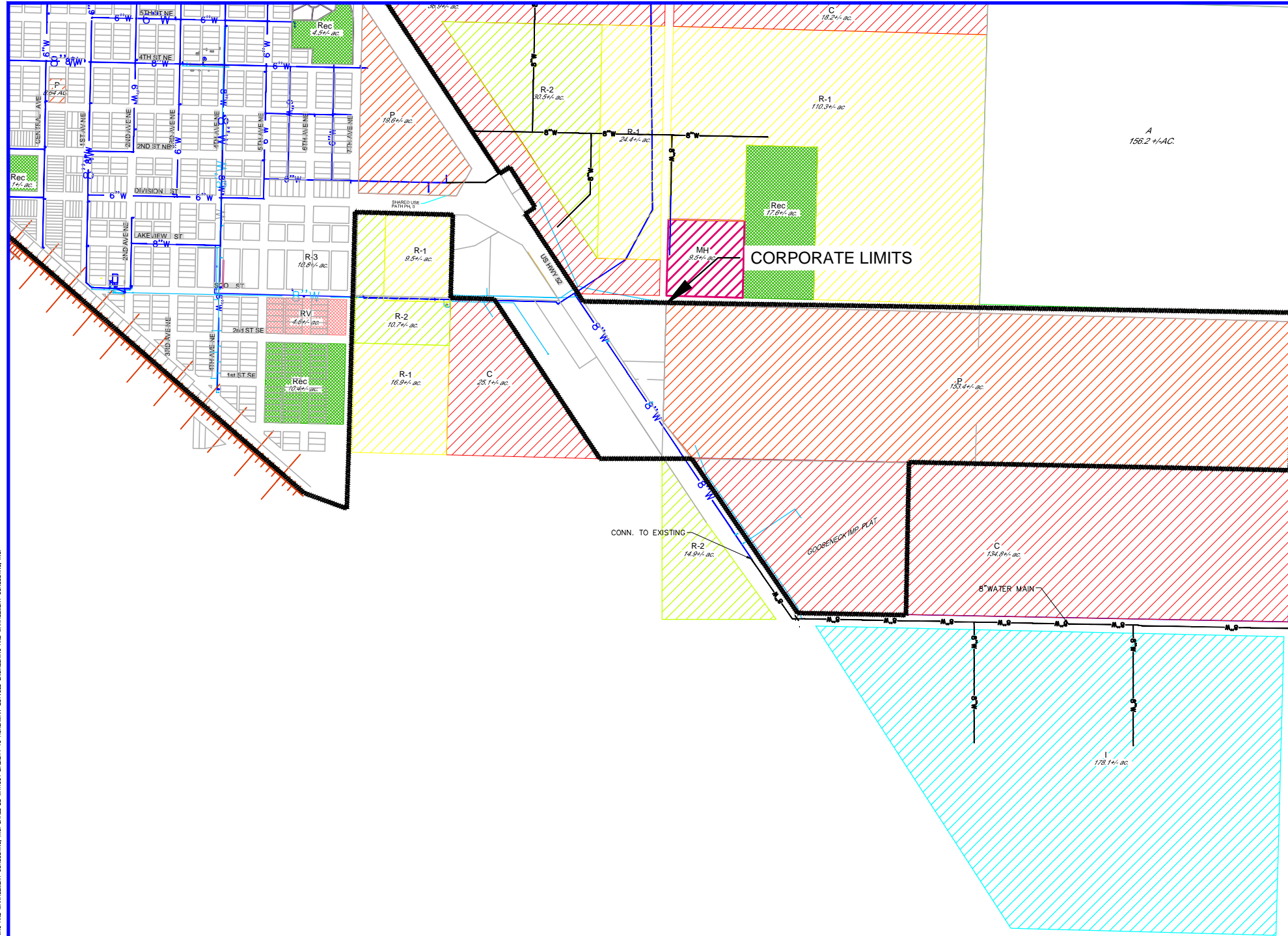
**ACKERMAN-ESTVOLD**  
*engineering and management consulting, inc.*  
 © 2011, ACKERMAN-ESTVOLD ENGINEERING AND MANAGEMENT CONSULTING, INC.  
 6008 HIGHWAY 2 EAST MINOT, NORTH DAKOTA 58701 (701) 837-8737  
 CIVIL ENGINEERING, PLANNING, & CONSTRUCTION MANAGEMENT

SCALE (H): 1"=1000'  
 SCALE (V): N/A  
 DRAWN BY: ALF  
 DESIGNED BY: SWR  
 CHECKED BY: SRW  
 DATE: 1/14/12

**Water Main Expansion-North  
 Growth Management Plan  
 City of Kenmare, North Dakota**

PROJECT NO.  
**R11007**  
 DRAWING NAME  
 Utilities

THIS DOCUMENT, TOGETHER WITH THE CONCEPTS AND DESIGNS DEPICTED HEREIN, IS INTENDED ONLY FOR THE SPECIFIC PURPOSE AND CLIENT FOR WHICH IT WAS PREPARED. REUSE OF AND MISORDER RELIANCE ON THIS DOCUMENT WITHOUT WRITTEN AUTHORIZATION AND ADAPTATION BY ACKERMAN-ESTVOLD ENGINEERING AND MANAGEMENT CONSULTING, INC. SHALL BE WITHOUT LIABILITY TO ACKERMAN-ESTVOLD ENGINEERING AND MANAGEMENT CONSULTING, INC.



**Legend**

- 3 — 4 inch Watermain (Ex.)
- 3 — 6 inch Watermain (Ex.)
- 3 — 8 inch Watermain (Ex.)
- 3 — 8 inch Watermain (Proposed)

NOTE: Routing & points of connection conceptual and subject to change

NO. REVISIONS	BY	DATE	APPR.

**ACKERMAN-ESTVOLD**  
*engineering and management consulting, inc.*

© 2011, ACKERMAN-ESTVOLD ENGINEERING AND MANAGEMENT CONSULTING, INC.  
 6008 HIGHWAY 2 EAST MINOT, NORTH DAKOTA 58701 (701) 837-8737  
 CIVIL ENGINEERING, PLANNING, & CONSTRUCTION MANAGEMENT

SCALE (H): 1" = 1000'
SCALE (V): N/A
DRAWN BY: ALF
DESIGNED BY: SWR
CHECKED BY: SRW
DATE: 7/14/12

**Water Main Expansion-South**  
**Growth Management Plan**  
 City of Kenmare, North Dakota

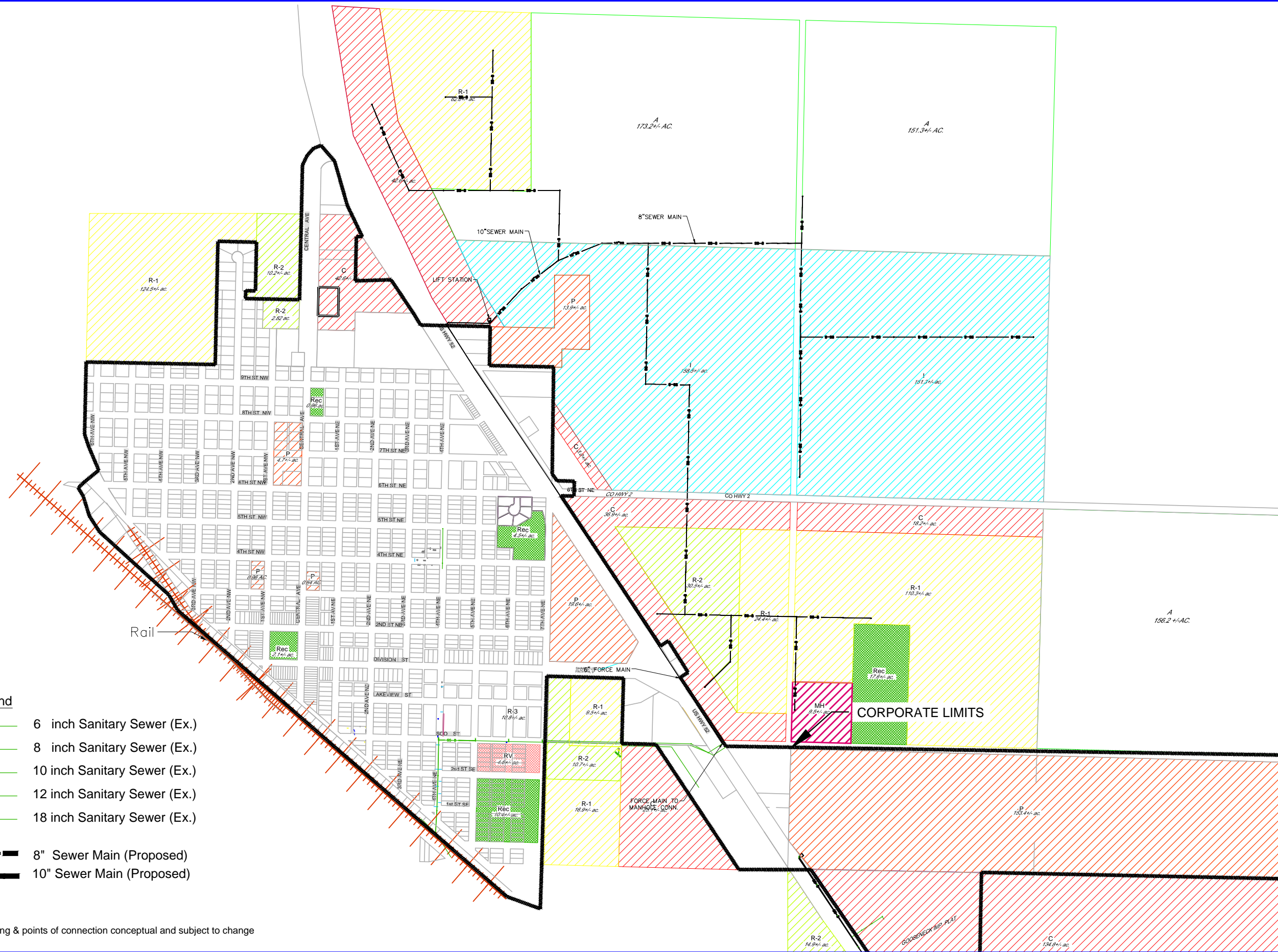
PROJECT NO. R11007
DRAWING NAME Utilities
2 OF 4

THIS DOCUMENT, TOGETHER WITH THE CONCEPTS AND DESIGNS DEPICTED HEREIN, IS INTENDED ONLY FOR THE SPECIFIC PURPOSE AND CLIENT FOR WHICH IT WAS PREPARED. REUSE OF ANY PORTION HEREIN WITHOUT THE WRITTEN AUTHORIZATION AND SIGNATURE OF ACKERMAN-ESTVOLD ENGINEERING AND MANAGEMENT CONSULTING, INC. SHALL BE WITHOUT LIABILITY TO ACKERMAN-ESTVOLD ENGINEERING AND MANAGEMENT CONSULTING, INC.

**Legend**

- 6" SS 6 inch Sanitary Sewer (Ex.)
- 8" SS 8 inch Sanitary Sewer (Ex.)
- 10" SS 10 inch Sanitary Sewer (Ex.)
- 12" SS 12 inch Sanitary Sewer (Ex.)
- 18" SS 18 inch Sanitary Sewer (Ex.)
- 8" Sewer Main (Proposed)
- 10" Sewer Main (Proposed)

NOTE: Routing & points of connection conceptual and subject to change



NO. REVISIONS	BY	DATE	APPR.

**ACKERMAN-ESTVOLD**  
*engineering and management consulting, inc.*

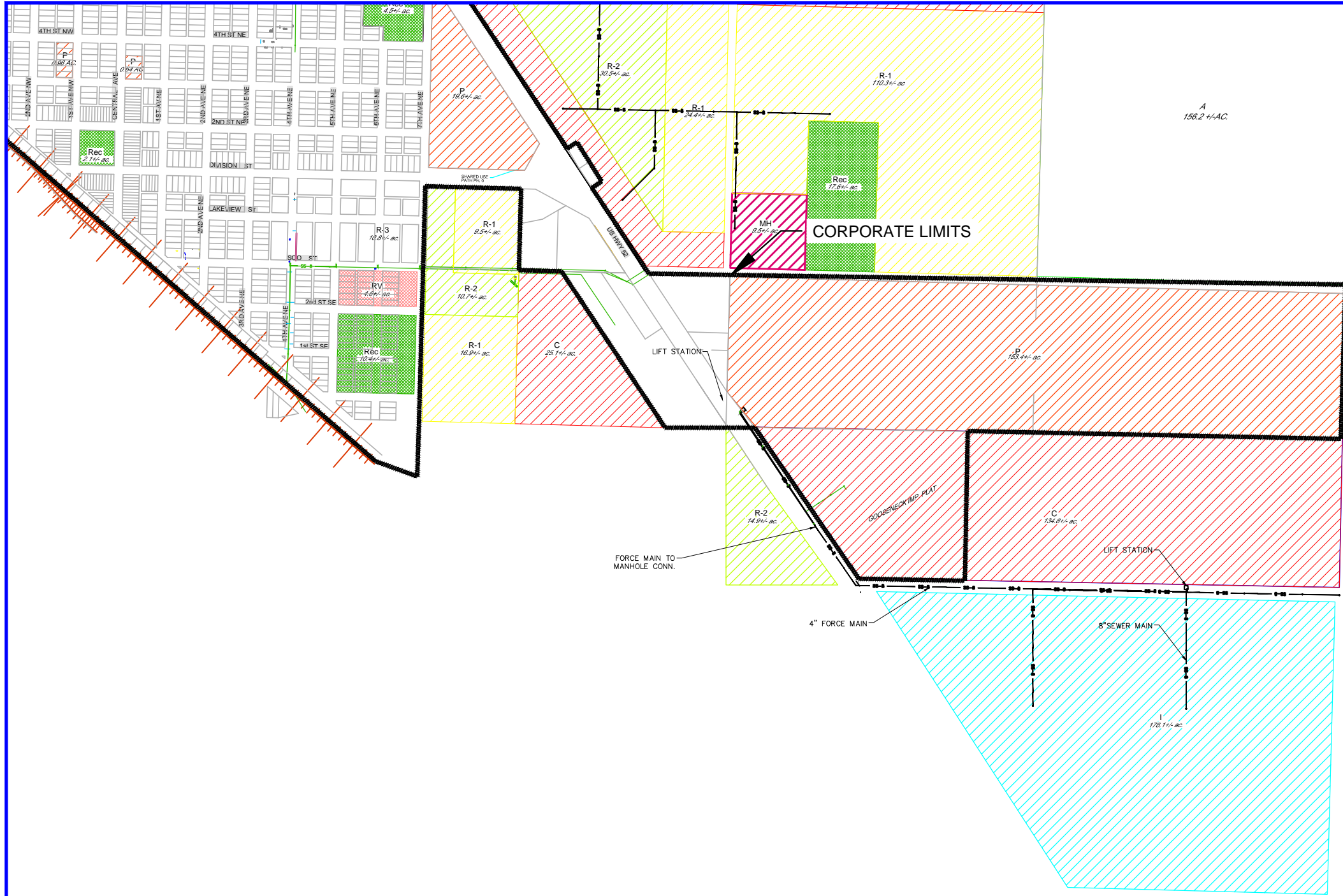
© 2011, ACKERMAN-ESTVOLD ENGINEERING AND MANAGEMENT CONSULTING, INC.  
 6008 HIGHWAY 2 EAST MINOT, NORTH DAKOTA 58701 (701) 837-8737  
 CIVIL ENGINEERING, PLANNING, & CONSTRUCTION MANAGEMENT

SCALE (H) 1" = 1000'  
 SCALE (V) 1" = 10'  
 DRAWN BY: ALF  
 DESIGNED BY: SWR  
 CHECKED BY: SRW  
 DATE: 1/14/12

**Sanitary Sewer Expansion-North**  
**Growth Management Plan**  
 City of Kenmare, North Dakota

PROJECT NO. R11007
DRAWING NAME Utilities
3 of 4

THIS DOCUMENT, TOGETHER WITH THE CONCEPTS AND DESIGNS DEPICTED HEREIN, IS INTENDED ONLY FOR THE SPECIFIC PURPOSE AND CLIENT FOR WHICH IT WAS PREPARED. REUSE OF AND MISORDER RELIANCE ON THIS DOCUMENT WITHOUT WRITTEN AUTHORIZATION AND ADAPTATION BY ACKERMAN-ESTVOLD ENGINEERING AND MANAGEMENT CONSULTING, INC. SHALL BE WITHOUT LIABILITY TO ACKERMAN-ESTVOLD ENGINEERING AND MANAGEMENT CONSULTING, INC.



**Legend**

- 6"SS — 6 inch Sanitary Sewer (Ex.)
- 8" — 8 inch Sanitary Sewer (Ex.)
- 10"SS — 10 inch Sanitary Sewer (Ex.)
- 12"SS — 12 inch Sanitary Sewer (Ex.)
- 18"SS — 18 inch Sanitary Sewer (Ex.)
- 8" — 8" Sewer Main (Proposed)

NOTE: Routing & points of connection conceptual and subject to change

NO.	REVISIONS	BY	DATE	APPR.

**ACKERMAN-ESTVOLD**  
*engineering and management consulting, inc.*

© 2011, ACKERMAN-ESTVOLD ENGINEERING AND MANAGEMENT CONSULTING, INC.  
 6008 HIGHWAY 2 EAST MINOT, NORTH DAKOTA 58701 (701) 837-8737  
 CIVIL ENGINEERING, PLANNING, & CONSTRUCTION MANAGEMENT

SCALE (H): 1" = 1000'
SCALE (V): N/A
DRAWN BY: ALF
DESIGNED BY: SWR
CHECKED BY: SRW
DATE: 7/14/12

**Sanitary Sewer Expansion-South**  
**Growth Management Plan**  
 City of Kenmare, North Dakota

PROJECT NO. R11007
DRAWING NAME Utilities
4 of 4